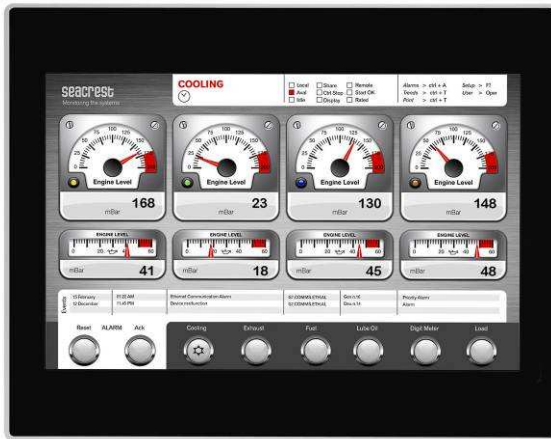


# UniOP eTOP413

The UniOP eTOP Series 400 HMI products combine state-of-the-art features and top performance with an outstanding design. They are the ideal choice for all demanding HMI applications including factory and building automation.

The eTOP413 features an industry standard 13.3" TFT display with WXGA resolution and full vector graphic capabilities. The JMobile software offers full vector graphic capabilities and plenty of connectivity options.



- 13.3" TFT color display, CCFL backlight
- 1280x800 pixel (WXGA) resolution, 64K colors
- Advanced vector graphics
- Resistive touchscreen
- 64 MB user memory
- 10/100 Ethernet interface
- USB interface
- Connection to bus systems using optional plug-in modules
- Slim design. Mounting depth less than 50mm
- JMobile runtime included

## Highlights

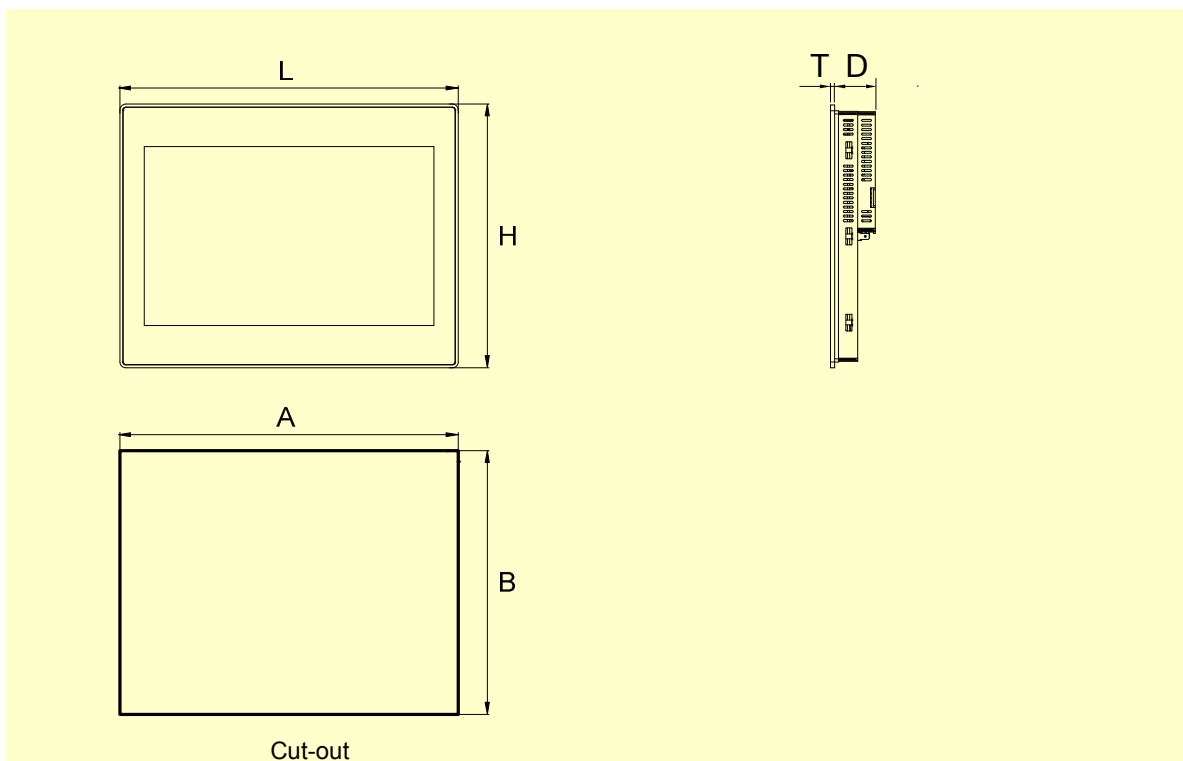
The eTOP Series 400 HMI panels have been designed to run the JMobile software.

- JMobile runtime included. Full compatibility with JMobile Studio.
- Full vector graphic support. Native support of SVG graphic objects. Transparency and alpha blending.
- Full object dynamics: control visibility and transparency, move, resize, rotate any object on screen. Change properties of basic and complex objects.
- TrueType fonts
- Multilanguage applications. Easily create and manage your applications in multiple languages to meet global requirements. Far East languages are supported. Tools available in JMobile Studio support easy third-party translations and help reducing development and maintenance costs of the application
- Data display in numerical, text, bargraph, analog gauges and graphic image formats.
- Rich set of state-of-the-art HMI features: data acquisition, alarm handling, scheduler and timed actions (daily and weekly schedulers, exception dates), recipes, users and passwords, e-mail and RSS feeds, rotating menus
- Includes support for a wide range of communication drivers for Factory and Building Automation systems.
- Multiple drivers communication capability.
- Remote monitoring and control. Client-Server functionality. Mobile clients supported.
- Off-line and On-line simulation with JMobile Studio.
- Powerful scripting language for automating HMI applications. Script debugging improves efficiency in application development.
- Rich gallery of symbols and objects
- Project & page templates
- Optional plug-in modules for fieldbus systems, networks and controllers. Compatible with TCM and SCM modules.

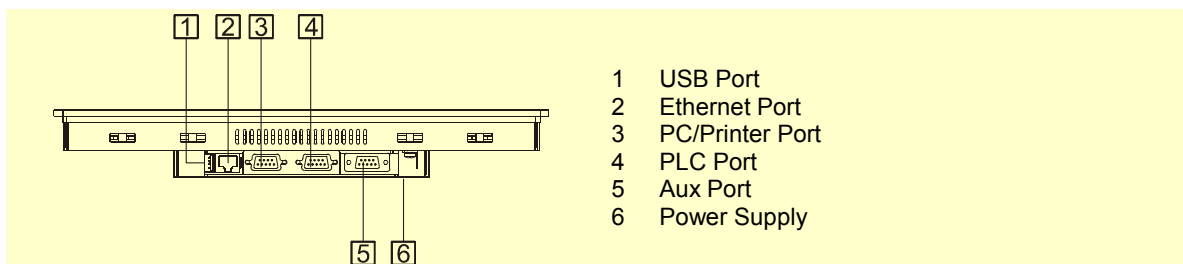
## Technical Data

<b>Display</b>		Hardware Real Time Clock	Yes, with battery back-up
Type	TFT	Screen saver	Yes
Resolution	1280x800, WXGA	Buzzer	Yes, audible feedback for touchscreen
Active display area	13.3" diagonal		
Colors	64K	<b>Ratings</b>	
Backlight	CCFL	Power supply voltage	24 Vdc (18 to 30 Vdc)
Brightness	250 Cd/m <sup>2</sup> typ.	Current consumption	1.1 A at 24 Vdc(max.)
Dimming	Yes	Fuse	Automatic
		Weight	Approx 2.8 Kg
<b>System Resources</b>		Battery	Rechargeable Lithium battery, not user-replaceable
Operating System	Windows Embedded CE 6.0		
User memory	128 MB Flash	<b>Environmental Conditions</b>	
RAM	256 MB DDR2	Operating temperature	0 to 50 °C (vertical installationmounting)
		Storage temperature	-20 to +70 °C
<b>Operator Interface</b>		Operating and storage humidity	5 – 85 % relative humidity, non-condensing
Touchscreen	Analog resistive	Protection class	IP66 (front panel) IP20 (rear)
User LED indicators	1		
System LED indicators	4	<b>Dimensions</b>	
		Faceplate LxH	337x267 mm
<b>Interfaces</b>		Cutout AxB	326x256 mm
Ethernet port	10/100 Mbit	Depth D+T	42mm+4mm
USB port	Host interface, version 2.0		
Serial Port 1	RS-232, RS-485, RS-422, software configurable	<b>Approvals</b>	
Serial Port 2	RS-232, RS-485, RS-422, software configurable	CE	Emission EN 61000-6-4 Immunity EN 61000-6-2 for installation in industrial environments
Aux port	Yes, optional fieldbus and controller modules	UL	UL508 Listed
<b>Functionality</b>			
Vector graphics	Yes, includes SVG support		
Object dynamics	Yes. Visibility, position, size, rotation for most object types.		
TrueType fonts	Yes		
Multiple driver communication	Yes, max 2 drivers		
Data acquisition and trend presentation	Yes. Flash memory storage limited only by available memory		
Multilanguage	Yes, with runtime language switching.		
Recipes	Yes. Flash memory storage limited only by available memory		
Alarms	Yes		
Historical event list	Yes		
Users and passwords	Yes		

**Dimensions**



**Connections**



**Ordering Information**

<b>Model</b>	<b>Part Number</b>	<b>Description</b>
eTOP413-White	ETOP413U101	13.3" TFT color touchscreen with Ethernet and USB interfaces. White front panel. JMobile run-time.
eTOP413-Grey	ETOP413U201	13.3" TFT color touchscreen with Ethernet and USB interfaces. Grey front panel. JMobile run-time.
eTOP413-Black	ETOP413U301	13.3" TFT color touchscreen with Ethernet and USB interfaces. Black front panel. JMobile run-time.
PROT-15		Disposable protection foil for 12.1" and 13.3" eTOP touch panels (10 pieces).
PROT-21		Disposable protection foil for 12.1" and 13.3" eTOP touch panels (10 pieces). UV resistant.

---

**ptn0322**

**Ver. 1.4**

**Copyright © 2010-2012 Exor International S.p.A. – Verona, Italy**

Subject to change without notice

The information contained in this document is provided for informational purposes only. While efforts were made to verify the accuracy of the information contained in this documentation, it is provided "as is" without warranty of any kind.

[www.uniop.com](http://www.uniop.com)