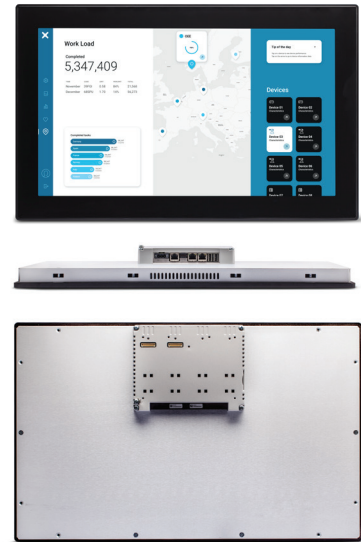


# eX721M - Tech Note

---

## 21.5" TFT PCAP Touchscreen, 3x Ethernet Ports, JMobile runtime

- 21.5" TFT color display, resolution 1920x1080 pixel
- Projected capacitive touchscreen. True glass design.
- Multitouch operation
- 64 bit quad core CPU
- pSLC mode for higher reliability
- Operating Temperature -20°C to +60°C
- IECEx, ATEX, DNV-GL, cULus, cULus: Class 1 Div 2



## Highlights

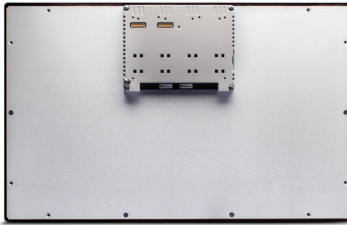
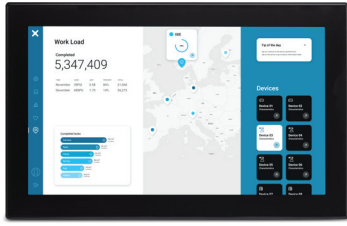
eX700M Series feature a powerful 64 bit quad core CPU that ensures JMobile applications are running in their optimal environment for the highest performance.

The power of eX700M Series is the best way to exploit the new graphical and security features in JMobile 4.5, in addition to the outstanding communication features such as OPC UA Client/Server and MQTT.

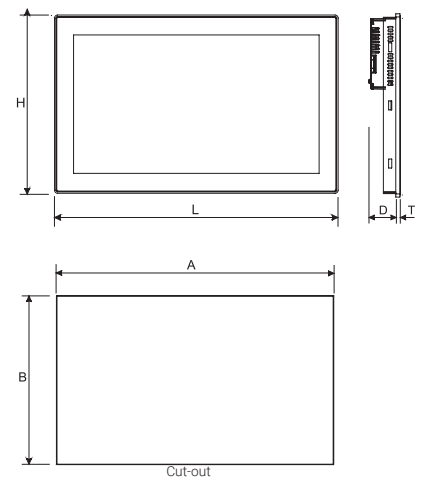
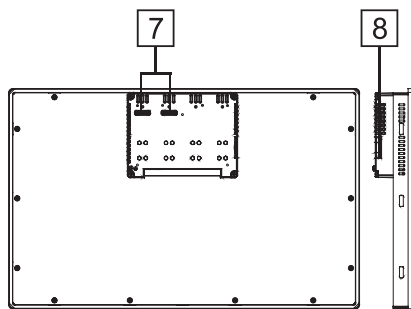
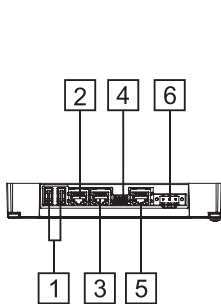
The glass projected capacitive touchscreen and the brilliant 7 inch widescreen display guarantee great optical performance; with the support of multitouch gesture programming they can create the most natural human interfaces.

eX700M Series is the ideal choice for the most demanding IIoT edge applications in factory, marine and building automation where powerful and performing HMI is needed for installation as close as possible to human operators.

# eX721M - Technical Data



System Resources	
Display - Colors	21,5" TFT LED - 16M
Resolution	1920x1080, full HD
Brightness	300 cd/m2
Dimming	Yes
Touchscreen	True Glass Projected Capacitive, Multitouch
CPU	64-bit RISC quad core - 1.6 GHz
Operating System	Linux
Flash	4 GB (eMMC pSLC)
RAM	2 GB
FRAM	64 KB
RT-Clock, RTCBack-up, Buzzer	Yes
Interface	
Ethernet port	3 (port 0 - 10/100/1000, port 1 - 10/100, port 2 - 10/100)
USB port	2 (Host V2.0, max. 500 mA)
Serial port	1 (RS-232, RS-485, RS-422, software configurable). Max 3 serial ports using plug-in modules.
SD card	Yes
Expansion	2 slot for plug in modules
Ratings	
Power supply	24 Vdc (10 to 32 Vdc)
Current Consumption	1.7 A at 24 Vdc (max.)
Input Protection	Electronic
Battery	Rechargeable Lithium battery, not user-replaceable
Environment Conditions	
Operating Temperature	-20° to +60 °C (vertical installation). Plug-in and USB devices may limit max temperature to +50 °C
Storage Temperature	-20°C to +70°C
Operating / Storage Humidity	5-85% RH, non condensing
Conformal Coating	Yes, printed circuit boards
Protection Class	IP66 (front), IP20 (rear) - Type: 12, 4X
Dimensions and Weights	
Faceplate LxH	552x347 mm (21.7x13.66")
Cutout AxB	541x336 mm (21.3x13.22")
Depth D+T	56+8 mm (2.20+0.31")
Weight	6.1 Kg
Approvals	
CE	Electromagnetic Compatibility Directive 2014/30/EU (EMC)
ATEX	Zone 2/22: II 3 G Ex ec IIC T5...T4 Gc, II 3 D Ex tc IIIC T95°C Dc -20°C ≤ Tamb ≤ +60°C or 0°C ≤ Tamb ≤ +50°C
IECEX	Zone 2/22: Ex ec IIC T5...T4 Gc, Ex tc IIIC T95°C Dc -20°C ≤ Tamb ≤ +60°C or 0°C ≤ Tamb ≤ +50°C
UL	cULus: UL61010-1 / UL61010-2-201
UL	cULus: Class 1 Div 2
DNV	Yes
RCM	Yes



- 1 USB ports 1 and 2
- 2 Ethernet port 2 (10/100 Mb)
- 3 Ethernet port 1 (10/100 Mb)
- 4 Serial port
- 5 Ethernet port 0 (10/100/1000 Mb)
- 6 Power supply
- 7 2 Expansion slots for plugin modules
- 8 SD Card slot

## Ordering Information

Model	Part Number	Description
eX721M	+EX721MU5P1	HMI 21.5" TFT 1920x1080, PCAP Touch, 3x Ethernet, JMobile runtime