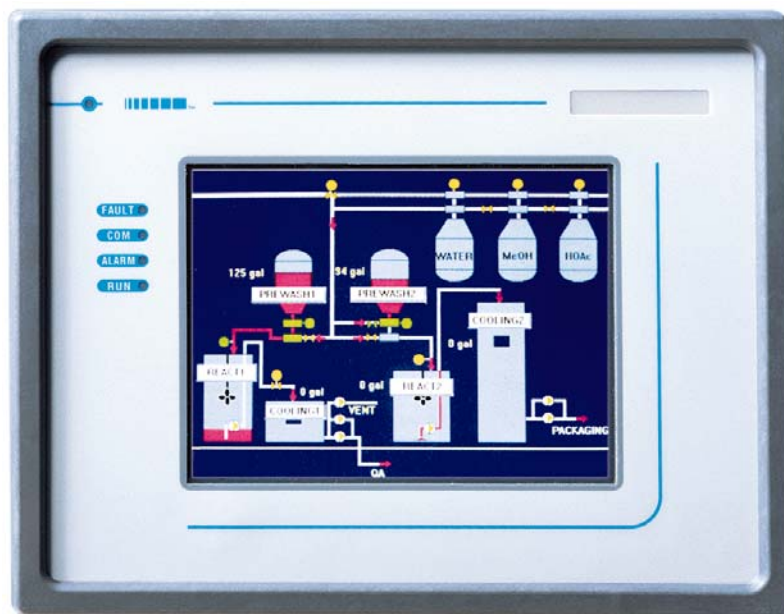


UniOP ECT-16, ELT-16 and ERT-16



Technical Data

Display	ECT-16 STN Color 5.6" ELT-16 Monochrome Electroluminescent 5.6" ERT-16 Monochrome LCD 5.6"
Graphical resolution	320x240
Graphical capabilities	YES
Touch panel	Resistive touch screen
Power supply	24 VDC
Program Memory	512 KB Flash EPROM (64 KB reserved for protocol) Expandable to 1 MB
Communication ports	1 RS-232 port (PC/Printer) 1 RS-232, RS-485, CL 20 mA PLC (-0045)
Aux Port	YES
Alarms	1024
Alarm info page	YES
Number of variables per page	Unlimited
Page size	16 rows
Macro Editor	YES
Hardware Clock/Calendar	YES
Historical event list	1024
Recipes	32 KB
UniNET Network	SERVER / CLIENT
Password	YES
Printer	YES

