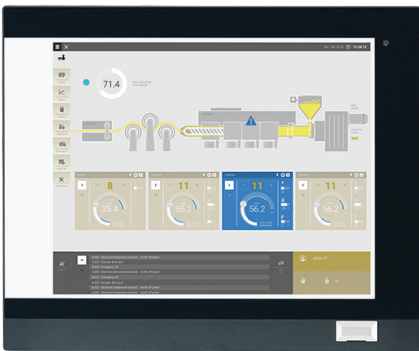


eTOP-IPC1570T Tech-Note

eTOP-IPC1570T series is a heavy industrial panel PC to support powerful 4th generation Intel® Core™ i processor, TFT LCD panel with LED backlight and userfriendly touch screen. The IP66 rated heavy-duty aluminum front bezel and the vibration-resistant rugged chassis are specifically designed for outdoor and harsh industrial environments. eTOP-IPC1570T series is ideal for use in oil and gas rig, wind farms, chemical factories, pharmaceutical factories, and hazardous working area.



- 4:3 15" XGA fanless panel computer
- Powerful 4th generation Intel® Core™ i processor
- Optional two expansion slots for add-on PCI or/and PCIe card
- Optional 3.5G/Wi-Fi module/2.5" HDD
- Front accessible USB 2.0 for easy of field maintenance
- Inside USB 2.0 type A connector for license key
- Metal housing with robust aluminum IP66 compliant front bezel for harsh environment
- Two FBI Windows
- Wide range 12~30VDC power input

Specifications

Panel

LCD Size: 15", 4:3
 Resolution: XGA 1024 x 768
 Luminance: 450cd/m²
 Contrast ratio: 800
 LCD color: 16.2M
 Viewing angle: 70 (U), 80 (D), 80 (L), 80 (R)
 Backlight: LED
 Touch
 5-wire resistive (flush panel type)
 Light transmission: 81%
 Interface: USB

System

CPU (optional): support 4th gen. Intel® Core™ i processor family, LGA1150 socket type

- Core™ i5-4590T, Quad Core, 2.0GHz, 6M Cache (maximum frequency 3.0GHz if turbo boost enabled)
- Core™ i5-4570TE, Dual Core, 2.7GHz, 4M Cache (maximum frequency 3.3GHz if turbo boost enabled)
- Core™ i3-4350T, Dual Core, 3.1GHz, 4M Cache (no turbo boost)
- Core™ i3-4340TE, Dual, Core, 2.6GHz, 4M Cache (no turbo boost)
- Pentium® G3320TE, Dual Core, 2.3GHz, 3M Cache (no turbo boost)
- Celeron® G1820TE, Dual Core, 2.2GHz, 2M Cache (no turbo boost)

BIOS: AMI BIOS

System chipset: Intel® Q87 PCH

System memory (optional): 2 x 204-pin DDR3/DDR3L SO-DIMM socket, support up to 16GB DDR3/ DDR3L 1333/1600, non-ECC and unbuffered

Storage device:

- 1 x External locked CFast socket
 - 1 x mini-PCIe w/o SIM card holder slot to support mSATA storage
 - 1 x Hard drive bay: support 1 x 2.5" SATA HDD/SSD(optional)
- Watchdog timer: Watchdog timeout can be programmable by software from 1 second to 255 seconds and from 1 minute to 255 minutes (tolerance 15% under room temperature 25°C)
- H/W status monitor: monitoring system temperature and voltage
- Expansion:
- 2 x mini-PCIe sockets (support optional Wi-Fi or 3.5G module/ NVRAM/mSATA storage)
 - 2 x Expansion slots for add-on PCI or/and PCIe cards (optional)
 - 1 x PCI and 1 x PCIe x4 slots
 - 2 x PCIe x4 slots
 - 2 x PCI slots
 - 1 x PCIe x16 slot
 - 1 x Front accessible USB 2.0

Rear I/O

1 x PS2 for keyboard/mouse
Ethernet: 2 x RJ45
2nd/3rd display: additional independent DisplayPort: 1 x DVI-I (DVI-D + DVI-A) and 1 x DisplayPort
Audio port: 1 x Line-out; 1 x Line-in; 1 x Mic-in
USB: 4 x USB 3.0
3-pin remote power on/off switch connector
Reset button
COM#1: RS232/422/485 w/ 5V or 12V selection
ATX power switch

Top I/O

COM#2 RS232/422/485 w/ 5V or 12V selection

Audio

HD codec: Realtek ALC886-GR
Audio interface: Line-out/Line-in/Mic-in audio jack

Ethernet

LAN chip: dual Intel® I210IT Gigabit LAN
Ethernet interface: 10/100/1000 Base-Tx Ethernet compatible

Fieldbus

Two FBI Windows

Mechanical & Environment

Color: Pantone 432C/RAL 70 24 front bezel
Enclosure: aluminum front bezel with SPPC nickel plated housing

IP protection: IP66 front

Mounting: panel/wall/stand/VESA 100mm x 100mm

Power:

- Power input: 12~30 VDC

- Power connector: 3-pin PHOENIX connector

Vibration:

- IEC 68 2-64 (w/ HDD)

- 1Grms @ sine, 5~500Hz, 1hr/axis (HDD operating)

- 2Grms @ sine, 5~500Hz, 1hr/axis (CFast operating)

- 2.2Grms @ random condition, 5~500Hz, 0.5hr/axis (non-operating)

Shock:

- IEC 68 2-27

- HDD: 20G @ wall mount, half sine, 11ms

Operating temperature

- Resistive: -20°C to 50°C

Storage temperature: -20°C to 75°C

Operating humidity: 10%~90% relative humidity, non-condensing (for IPPC A1570T series, limits to be at 90% RH at max 50°C)

Dimension: 400 x 330 x 104.9 mm

Weight: 8.99kg (barebone)

Certifications

CE (including EN61000-6-2/EN61000-6-4), FCC Class A

OS Support Lists

Windows 7 32-bit and 64-bit

Windows 8.1 32-bit and 64-bit

Windows 10 64-bit

