

# eTOP-IPC1680P Tech-Note

---

## 15.6" TFT HD Heavy Industrial Panel PC 6th Generation Intel® Core™

- 6th Generation Intel® Core™ i5-6300U, 2.40 Ghz
- Metal housing with robust aluminum front zero bezel for harsh environment
- 10 points P-Cap multi-touch with zero bezel flush front design
- Dual GbE/2nd DisplayPort/Dual USB 3.0 & USB 2.0
- 1 x mini-PCIe sockets, 1 x M.2, 1 x RS232/422/485
- DDR3L 8GB/2.5" HDD bracket
- IP66 compliant front panel
- Mounting support: panel/wall/stand/VESA 100x100 mm
- DC power input 24VDC



## Highlights

The 15.6" fanless panel PC eTOP-IPC1680P incorporating an industrial motherboard is intended for versatile industrial applications.

The panel PC has a touch screen LED backlight LCD panel with 1366 x 768 (HD) resolution. The front panel which adopts flush design and complies with IP66 standard makes it the perfect fit in industrial applications.

The eTOP-IPC1680P supports WLAN expansion and others via dual Gigabit Ethernet connectors, one mini-PCIe slot and one M.2 slot. With support for DC power input of 24VDC, eTOP-IPC1680P can gain a strong foothold in industrial field and machine devices. In addition, eTOP-IPC1680P can hook 2nd display via a DisplayPort for dual independent display. eTOP-IPC1680P has one adjustable RS232/422/485 ports.

# eTOP-IPC1680P Technical Data



## Panel

- LCD size: 15.6", 16:9
- Resolution: HD (WXGA) 1366 x 768
- Luminance: 400cd/m2
- Contrast ratio: 500
- LCD color: 16.7M
- Viewing angle: 80 (U), 80 (D), 85 (L), 85 (R)
- Backlight: LED

## Touch

- Ten points P-Cap (projected capacitive touch)
- Touch light transmission: 87%
- Anti-scratch surface: 7H hardness
- Touch interface: USB

## System

- Support 6th generation Intel® Core™ i5/i3 BGA type processor - Core™ i5-6300U, 3M Cache, up to 3.0GHz - Core™ i3-6100U, 3M Cache, up to 2.3GHz (optional)
- BIOS: AMI BIOS
- System memory: 2 x 204-pin DDR3L SO-DIMM socket, 8GB DDR3L (default), support up to 16GB DDR3L-1866, non-ECC and un-buffered
- Storage device:
  - 1 x M.22242B key socket: optional M.22242 storage
  - 1 x Hard drive bay: optional 1 x 2.5" SATA HDD
- Watchdog timer: Watchdog timeout can be programmable by software from 1 second to 255 seconds and from 1 minute to 255 minutes (tolerance 15% under room temperature 25°C)
- Expansion: 1 x mini-PCIe sockets (support optional Wi-Fi module)
- Front LED indicator to show operating status

## Power button

- COM #1: RS232/422/485
- COM #2&3: RS232

## Ethernet

- LAN chip: dual Intel® I210-AT Gigabit LAN
- Ethernet interface: 10/100/1000 based-Tx Ethernet compatible

## Mechanical & Environment

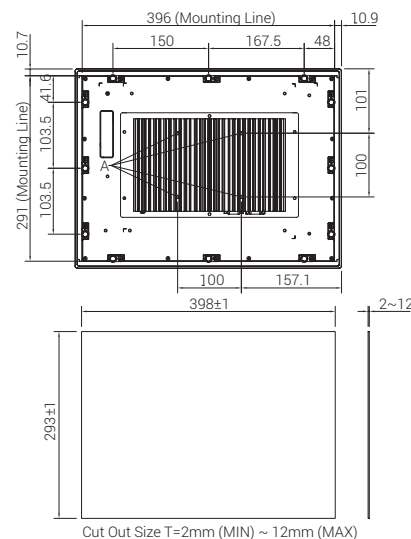
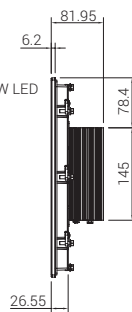
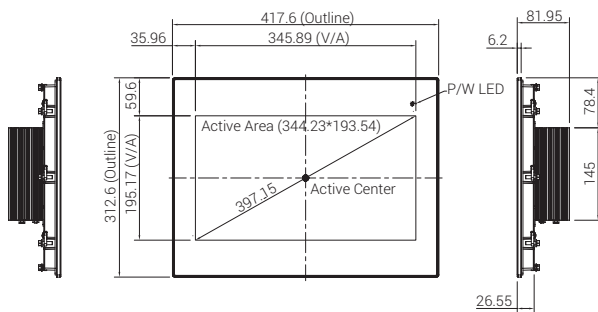
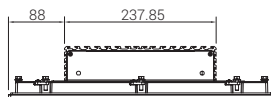
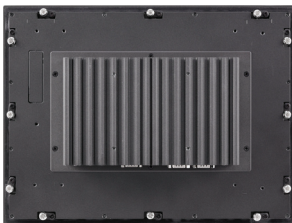
- Color: black silver front bezel
- IP protection: IP66 front
- Mounting: panel/wall/stand/VESA 100mm x 100mm
- System with panel mounting kit w/o panel mounting hole
- Power:
  - Power input: 24 VDC
  - Power adapter: optional AC to DC power adapter (+24V, 60W)
- Vibration:
  - IEC 682-64 (w/HDD)
  - 1 Grms@ sine, 5~500 Hz, 1hr/axis (HDD operating)
  - 2 Grms@ sine, 5~500 Hz, 1hr/axis (SSD operating)
  - 2.2 Grms@ randomcondition, 5~500Hz, 0.5hr/axis (non-operating)
- Shock:
  - IEC682-27
  - HDD: 20G@wallmount, halvesine, 11ms
- Temperature:
  - Operating temperature: 0 °C to 50 °C
  - Storage temperature: -20 °C to 75 °C
  - Operating humidity: 10% ~ 90% relative humidity, non-condensing
- Dimension: 417.6 x 312.6 x 81.95 mm
- Weight: 5.98 kg

## Certifications

- CE (including EN61000-6-2/EN61000-6-4)
- FCC class A

## OS Support Lists

- Windows 10 64-bit



## Ordering Information

Model	Part Number	Description
eTOP-IPC1680P	+72IPC1680P	15.6" TFT HD 16:9 Heavy Industrial Panel PC 6th Generation Intel® Core™ i5-6300U, 2.40 GHz Multi-Touch Screen, 8GB DDR3L, 4 x USB, 3 x COM