

Xedge Slim - Tech Note

Industrial PC, Intel Atom® x6000E Series Dual or Quad Core up to 1.9 GHZ, DIN mounting

- 2 USB 3.1 gen.1
- 2 Ethernet 1.0 GbE
- 1 Display port 1.2
- 2 Expansion slot for plug-in modules
- Protection grade IP20
- Operating Temperature -20°C to +60°C
- JMobile Runtime (Optional)
- Linux or Windows operating system (Optional)



Highlights

The Xedge Slim is a compact and rugged industrial PC specifically engineered for space-constrained environments. With a focus on versatility, it is ideal for edge computing applications requiring real-time performance and reliable connectivity. The device is built to operate effectively in harsh conditions, featuring a robust design that supports extended temperature ranges for continuous operation.

Key features include:

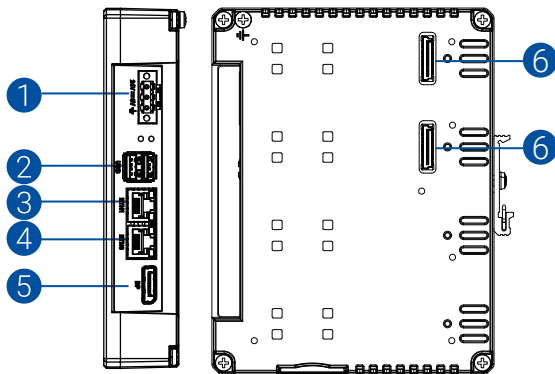
- **Optimized for Compact Spaces:** Designed for DIN-rail mounting, making it suitable for installations where space is limited
- **Intel Atom Processors:** Available with dual-core and quad-core options to match specific application needs
- **Modular Architecture:** Supports easy expansion with M.2 SATA SSD and Exor plug-in modules for tailored configurations
- **Real-Time Capabilities:** Designed to handle low-latency applications, ensuring quick responsiveness for critical tasks

Xedge Slim Technical Data

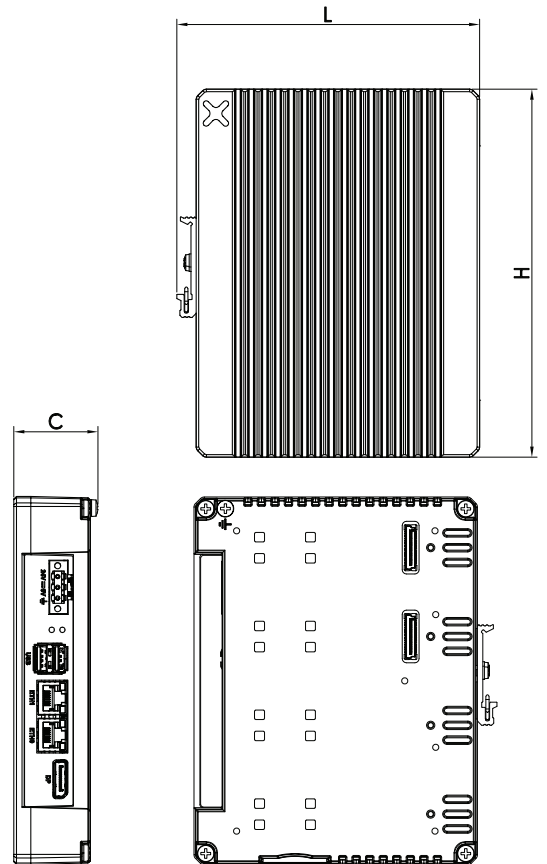


System Resources	
CPU	Intel X6214RE - 1.4 GHz – Intel x6425RE - 1.9 GHz
Operating system	None. Windows, Linux RT (Optional).
Flash Storage	EMMC 64 GB
RAM	LPDDR4x up to 16 GB
FRAM	64 kB
Real time Clock, RTC Back-up	Yes, VL2330 Lithium battery
Security	TPM 2.0
Interface	
Display I/O	1 Display port 1.2
Ethernet port	2 1.0 GbE
USB port	2 (USB 3.1 gen.1)
Storage	Up to 1 TB M.2 SATA SSD (Optional)
Expansion	2 Slot for EXOR International plug in modules
Ratings	
Power supply	24 Vdc (10 to 32 Vdc)
Current Consumption	0.4 A at 24 Vdc typ without expansion modules and USB load, Class 2 2 A at 24 Vdc max with 2 expansion modules and 2 X 900 mA USB load, Class 2
Input protection	Anti-inversion, Overvoltage, Resettable Fuse
Environment Conditions	
Operating Temperature	-20°C to +60°C (vertical installation), -20°C to +55°C with optional SSD
Storage Temperature	-30°C to +80°C
Operating/Storage Humidity	5-85% RH, non condensing
Protection class	IP20
Dimensions and Weights	
Faceplate LxH	144x174 mm (5.67"x6.85")
Depth C	40 mm (1.57")
Weight	0.925 Kg
Mounting	DIN Rail (TS35)
Approvals	
CE	Electromagnetic Compatibility Directive 2014/30/EU (EMC)
UL*	cULus: UL61010-1 / UL61010-2-201

*Scheduled for 2025



1. Power supply
2. USB 3.1 ports
3. Ethernet 1 1.0 GbE
4. Ethernet 0 1.0 GbE
5. Display port
6. Expansion slot for plug-in modules



Ordering Information

Model	Part Number	Description
Xedge Slim	Contact Your Local Sales	Industrial PC, Intel Atom® x6000E Series, Dual or Quad Core up to 1.9 GHZ, DIN mounting