

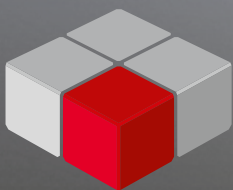
IEC 61131-3 Compliant Programmable Logic Controller

EHV+ Series

Powered by CODESYS

HITACHI
Inspire the Next

Powerful general purpose PLC



CODESYS

Powerful and flexible

Hitachi EHV+ Series

Core of the new powerful general purpose EHV+ CPU series is the CODESYS V3 runtime system. The result is an open and flexible system which is completed through utilising existing EH-150 modules.



Memory capacity

- User program (RAM) up to 2048 kByte
- Boot project (FLASH) up to 2048 kByte
- Source file (FLASH) up to 5 MByte
- Data memory 512 kByte

Communication interfaces

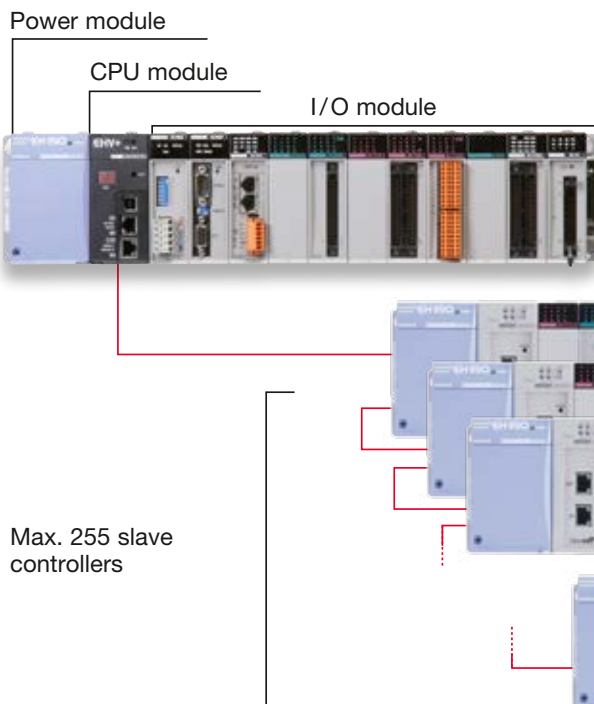
- Ethernet (10BASE-T/100BASE-TX)
- USB interface (Ver. 2.0 Full speed 12 Mbps)
- Serial interface (RS-232C/RS-422/RS-485)

Programming

- Communication protocol CODESYS V3
- Programming languages according to IEC 61131-3: LD, IL, FBD, ST, SFC, CFC

Communication protocols

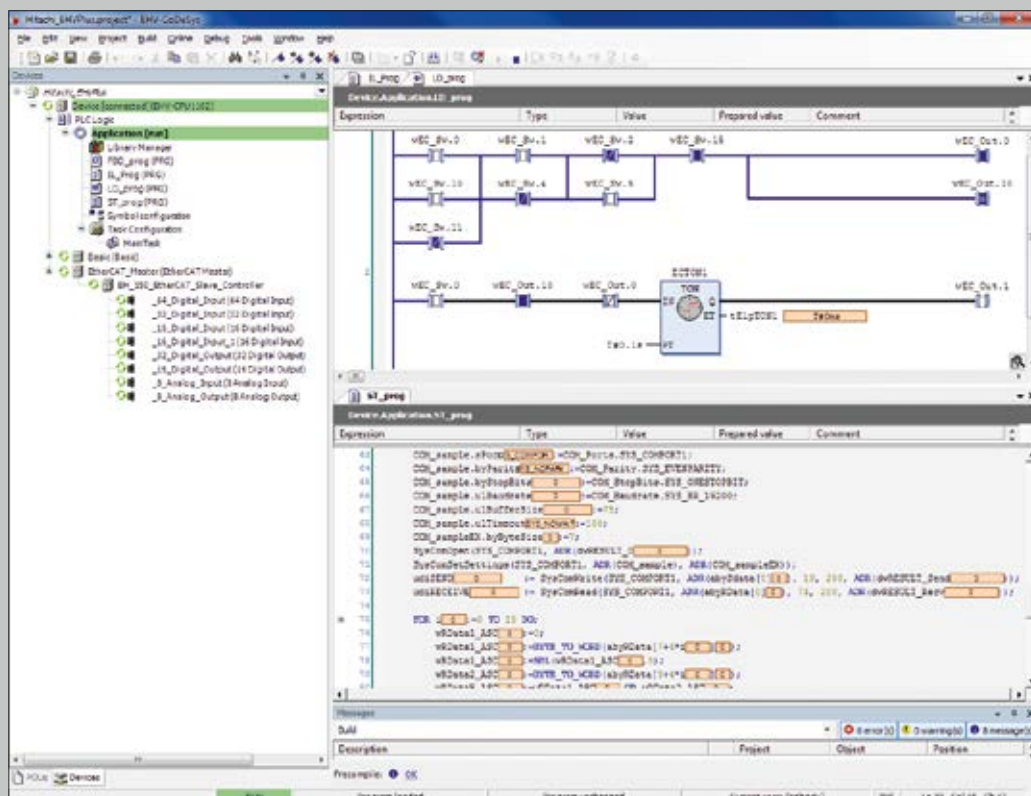
- Modbus TCP Client/Server
- Modbus RTU Master
- EtherCAT Master



EHV+ CPU module is supporting the EtherCAT master function. It is possible to control up to 11472 bytes I/O (Input 5736 bytes, Output 5736 bytes).

EHV+ CPU module

The new EHV+ series consists of 2 powerful CPUs. The models differ through memory capacities (512, 2048 kByte) whilst maintaining a consistently high performance. The EHV+ CPU is compatible with a variety of open networks through use of the onboard Ethernet interface.



Specifications

| Type | | EHV-CPU1025 | EHV-CPU1102 |
|---------------------------|----------------------|---|-------------------|
| Processing speed | | 80 ns/instruction | 80 ns/instruction |
| Memory | User program (RAM) | 512 kByte | 2048 kByte |
| | Boot project (FLASH) | 512 kByte | 2048 kByte |
| | Source file (FLASH) | 5 MByte | 5 MByte |
| | Data memory | 384 kByte | 384 kByte |
| | Retain data memory | 128 kByte | 128 kByte |
| Supported expansion bases | | 5 | 5 |
| Fieldbus memory | | 16 kByte (2 kByte × 8 units) | |
| Processing method | | Refresh | |
| Programming software | | EHV-CODESYS (Version 3.5) | |
| Programming languages | | LD, IL, FBD, ST, SFC, CFC (Continuous Function Chart) | |
| Communication port | | CODESYS V3 protocol | |
| USB | 2.0, Full speed | Programming | |
| Ethernet | UDP/IP, TCP/IP | Programming / General purpose / Modbus TCP Client / Modbus TCP server / EtherCAT Master / EtherNet/IP (under development) | |
| Serial | RS232C/422/485 | General purpose / Modbus RTU Master | |
| User Interface | Display | RUN LED, ERR LED, 7-segment LED | |
| | Run switch | Remote RUN/STOP (RUN position) | |
| | E.CLR switch | Clear error indication in 7-segment LED | |
| RTC | | Supported (access by RTC FB) | |
| Battery | | Built-in (LIBAT-H) | |
| Approval | | CE, UL, cUL, C-Tick | |

EHV-CODESYS

| Item | Descriptions | |
|----------------------|-------------------|--|
| System requirements | RAM | 1 GB |
| | Operating System | Windows XP/Windows Vista/Windows 7 (32-bit/64-bit) |
| | CPU | 1 GHz Pentium |
| | Hard disk | 1 GB |
| | Screen resolution | 1024 × 768 |
| Communication cables | USB | Standard USB cable (Type B connector) |
| | Ethernet | UTP or STP cable (cat5E) |

Programming software EHV-CODESYS

Thanks to full compliance to the IEC 61131-3 standard, the user can select among 6 programming languages (LD, IL, FBD, ST, SFC, CFC) in EHV-CODESYS.

In addition to the PLC programming functionality, EHV-CODESYS offers powerful visualisation functions such as an integrated graphical editor, which is useful for testing, commissioning or diagnostic purposes.

Hitachi Europe GmbH, Am Seestern 18, D-40547 Düsseldorf
 Tel.: +49 (0) 211-5283-0, Fax: +49 (0) 211-5283-649
 www.hitachi-ds.com, info@hitachi-ds.com
 ☎ Hitachi Industrial Equipment Systems Co., Ltd., Tokyo

All company and product names in this brochure are the property of the respective companies.