



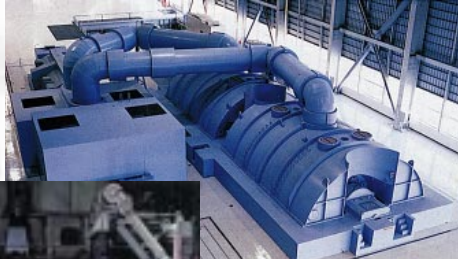
HITACHI HITACHI HITACHI

HITACHI PLC

H-200/250/252 SERIES

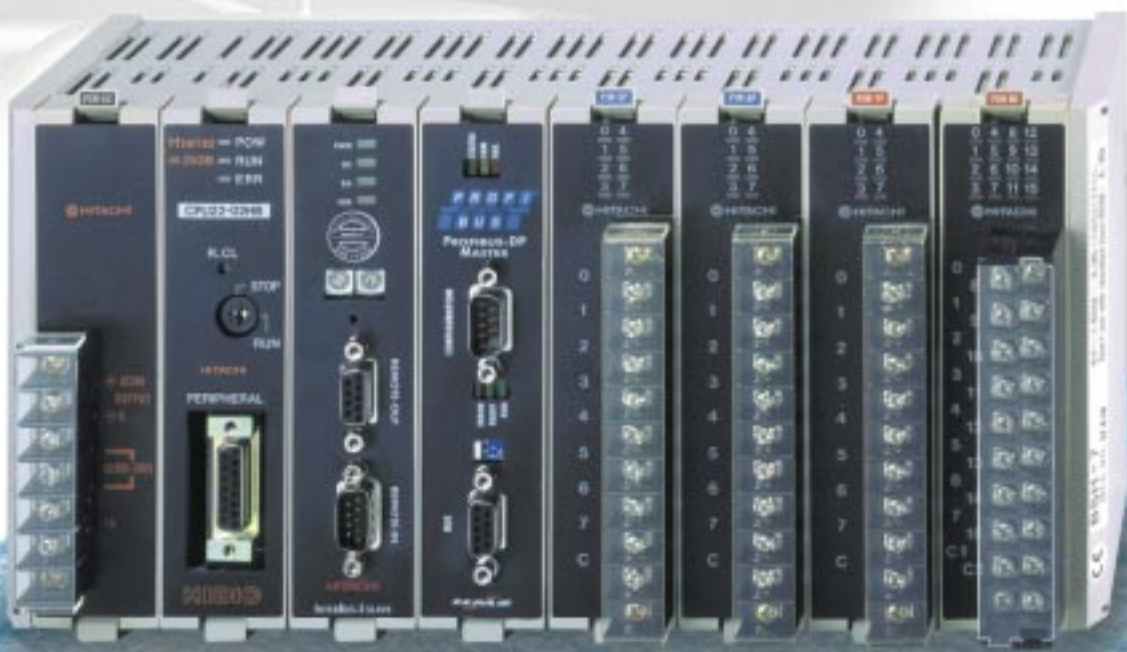
Programmable Logic Controllers

Technical Data



Medium size PLC

- High-speed, modular PLC
- Up to 928 I/Os
- A CPU processing speed of up to 0.2 μs/command
- Extensive program capacity
- Large set of application commands
- Various communication options for virtually all network levels
- Individual modules for specific applications available
- Fieldbus systems:
PROFIBUS DP
INTERBUS-S
ETHERNET
HITACHI LINK

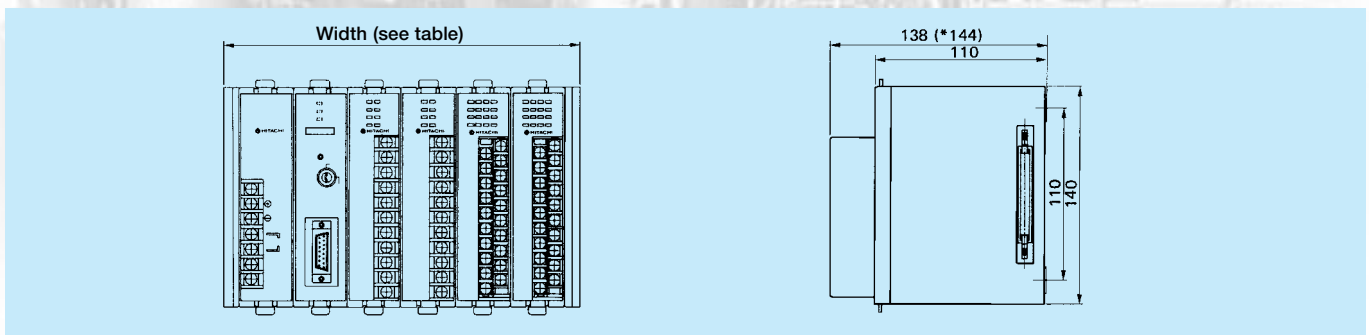


H-200/250/252 SERIES

All Features at a Glance

Type		Modular Control System (Central Units)			
		H200 / CPU-02H	H250 / CPU21-02H	H252B / CPU22-02HB	H252C / CPU22-02HC
Power Supply	24V DC	•	•	•	•
	110 - 240 VAC	•	•	•	•
Cycle Time	Bit Operations	1,5µs	0,6µs	0,2µs	0,2µs
Memory	Program (1 step = 4 byte)	32kByte	32kByte	64kByte	64kByte
	Type	RAM	RAM	RAM	RAM
	Pluggable	16 / 32 / 64 kByte EPROM/EEPROM for storing PLC program	16 / 32 / 64 kByte EPROM/EEPROM for storing PLC program	16 / 32 / 64 kByte EPROM/EEPROM for storing PLC program	16 / 32 / 64 kByte EPROM/EEPROM for storing PLC program
Modules	Digital Inputs	8 / 16 / 32	8 / 16 / 32	8 / 16 / 32	8 / 16 / 32
	Type of Inputs	DC / AC	DC / AC	DC / AC	DC / AC
	Digital Outputs	8 / 16 / 32	8 / 16 / 32	8 / 16 / 32	8 / 16 / 32
	Type of Outputs	Relay/Trans/Triac	Relay/Trans/Triac	Relay/Trans/Triac	Relay/Trans/Triac
	Analog Inputs	6 / 8	6 / 8	6 / 8	6 / 8
	Type of Analog Inputs	I / U / PT100 / thermocouples	I / U / PT100 / thermocouples	I / U / PT100 / thermocouples	I / U / PT100 / thermocouples
	Analog Outputs	2 / 4	2 / 4	2 / 4	2 / 4
	Type of Analog Outputs	I / U	I / U	I / U	I / U
	Expandable by Expansion Rack	•	•	•	•
	Expandable by Distributed I/Os	•	•	•	•
	Counter	1 Channel 10 kHz	1 Channel 10 kHz	1 Channel 10 kHz	1 Channel 10 kHz
	Positioning	1 Axis, pulse output	1 Axis, pulse output	1 Axis, pulse output	1 Axis, pulse output
	Number of Modules	3, 4, 5, 6, 7 or 9	3, 4, 5, 6, 7 or 9	3, 4, 5, 6, 7, 9 or 10	3, 4, 5, 6, 7, 9 or 10
	Max. Number of Modules (central)	16	16	29	29
Max. Number of Modules (distributed)	32	32	1056	1056	
Special Functions	Double Word Processing	-	-	•	•
	PID Control	-	-	•	•
	Real Time Clock	•	•	•	•
Communication	Serial	RS-232	RS-232	RS-232	RS-232 (2 x)
	PROFIBUS-DP	-	-	•	•
	INTERBUS-S	-	-	•	•
	Ethernet TCP/IP	-	-	•	•
	Hitachi Link	•	•	•	•
Connections	Terminal blocks, plug connectors (32 I/O modules)				
Mounting	DIN rail or wall mounting				

H-200/250/252 Series Dimensions



Type	BSH-3/BSM-3A	BSM-4A	BSH-5/BSM-5A	BSM-6A	BSH-7/BSM-7A	BSM-9B	BSH-10
I/O modules	3	4	5	6	7	9	10
Width mm	80	120	160	200	240	310	345